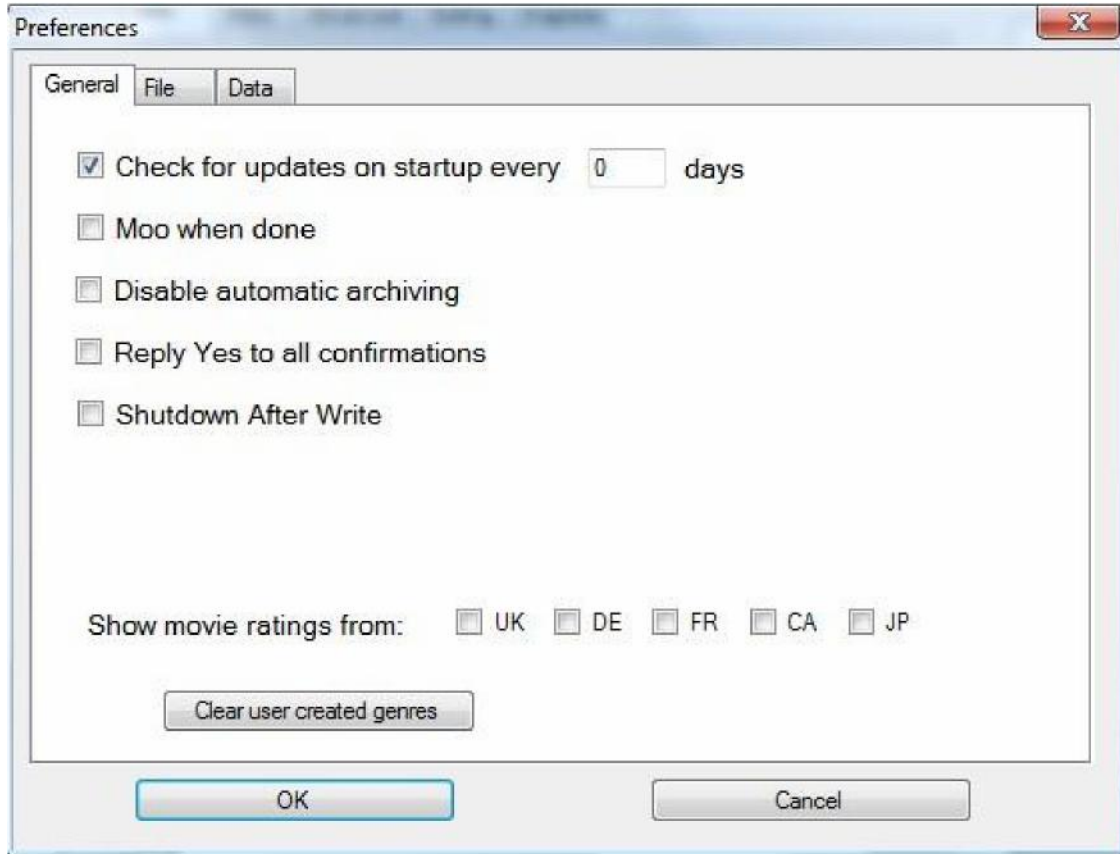


MetaX - Preferences

MetaX gives you many choices on how to handle tag data and video files. Let's take a look at all of the preferences in depth.

General Preferences



The general preferences contain options for overall operation of the MetaX application.

Check for updates on startup -- When selected, MetaX will check to see if a new version is available when launched. You can always manually check for updates from the MetaX menu. Not Implemented.

Moo when done -- MetaX will play an alert sound when queue processing is completed if this preference is set.

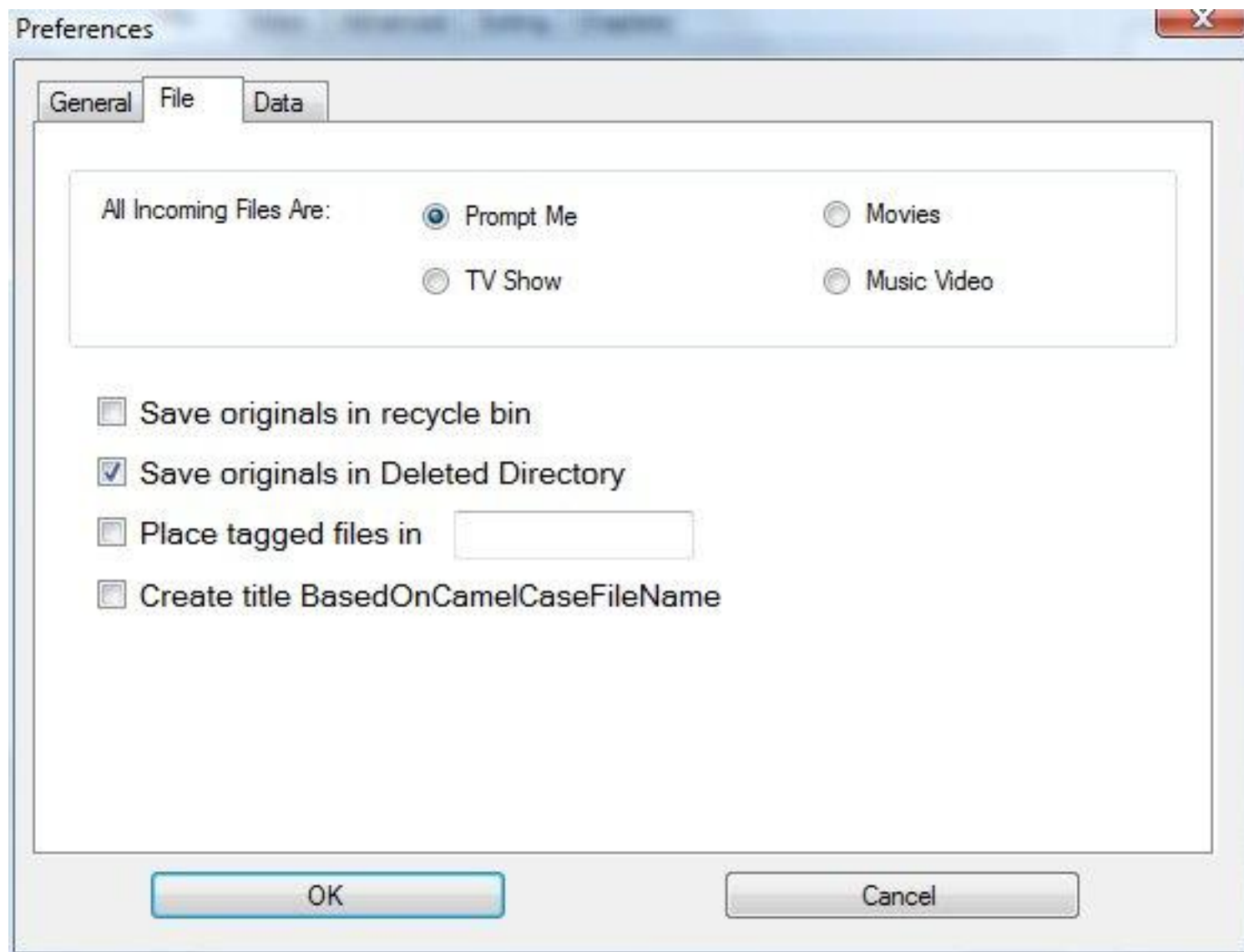
Disable automatic archiving -- MetaX normally saves all of the tag data that you write to an archive database. This database is stored in the program directory as archive.db. Disabling this feature will result in no data being stored.

Reply Yes to all confirmations - If you want MetaX to run unattended, you can use this option so that any confirmation dialog is automatically responded to. See the error messages document for a list of the conditions this would apply to.

Shutdown after write - If you plan on queuing up a list of files and want your computer to shut down after they are all written, you can use this option. If this option is set, when you first start the write MetaX will ask for a confirmation that you want the computer to shut down when it is done. This confirmation will not be handled by the option above.

Clear user created genres -- Any non-standard genre that you enter is automatically stored by MetaX for future use. Click this button to empty that cache.

File Level Preferences



The file level preferences control how MetaX deals with your movie files and their names.

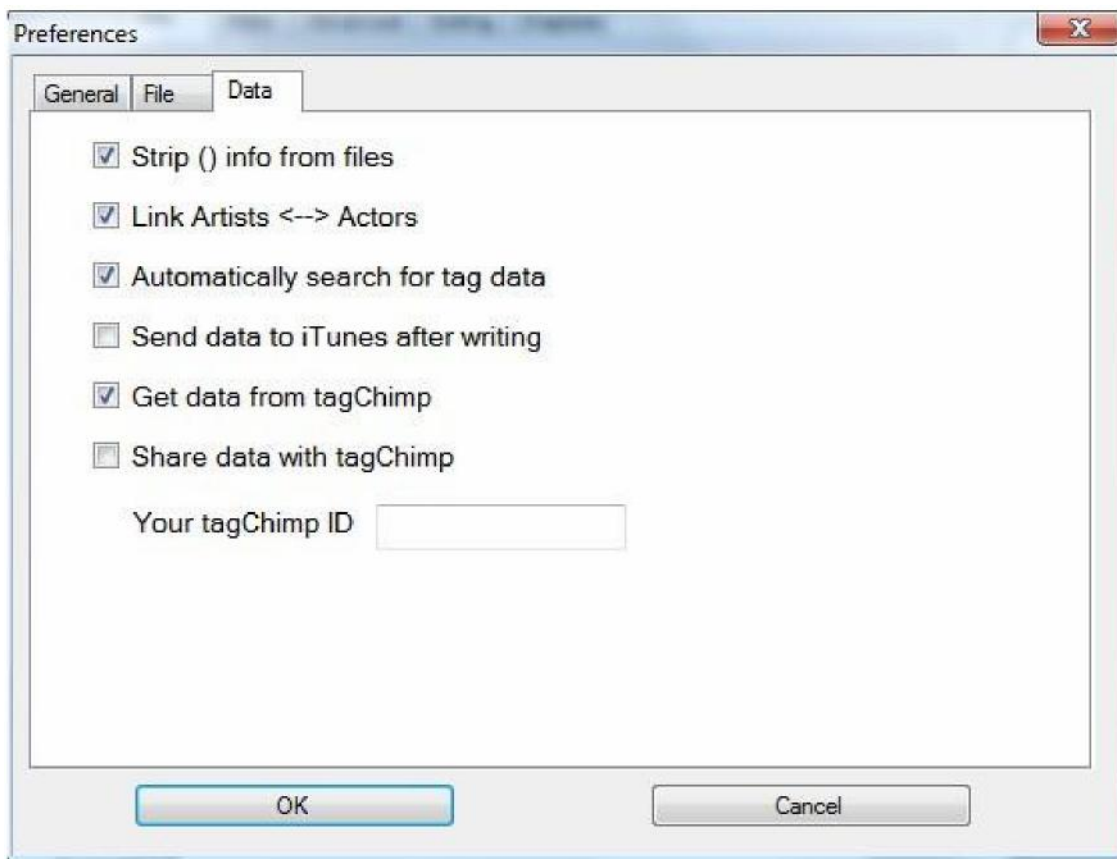
Save originals in recycle bin -- If this option is enabled, MetaX will put a copy of your original file in the recycle bin before writing any tags. This provides a ready backup should anything go wrong during the tagging process. If the recycle bin is not enabled on the drive where MetaX is installed, it will warn you of this. If it's not enabled on the directory where the file exists, you will be warned as well.

Save originals in Deleted Directory -- If this option is enabled, MetaX will put a copy of your original file in a directory called Deleted in the same directory as the original file before writing any tags. This provides a ready backup should anything go wrong during the tagging process, but doesn't require the use of the recycle bin.

Save tagged files in -- This option caused the tagged file to be saved to a different directory (as opposed to saving the original to a different directory). You can specify an absolute path (c:\tagged) or a relative path (tagged) which will be created in the directory where the original file exists.

Create title BasedOnCamelCaseFileName -- When this preference is selected, MetaX will attempt to make a title to search for metadata with based on your file's name. For example: "KingdomOfHeaven.mp4" would be automatically converted to "Kingdom of Heaven". This can be quite handy for tagging newly created files.

Data Preferences



The data preferences control how MetaX deals with tag data from searches.

Strip () info from titles -- Some titles from Amazon and tagChimp.com may contain parenthetical information at the end, i.e. (Blu-Ray). This option will automatically remove that data so that you have a clean title.

Link Artist<-->Actors -- When enabled, the Artist field will be linked to either the Actors or Show field depending on the video type.

Automatically search for tag data -- When selected, MetaX will automatically search for metadata when your file is opened. A manual search can always be done by typing the search term in the search field and clicking the "Go!" button.

Send to iTunes after writing -- When enabled, MetaX will send your newly tagged file to iTunes automatically.

Get data from tagChimp.com -- Include tagChimp.com in your search for [metadata](#). tagChimp.com is a great source for high quality metadata.

Share data with tagChimp.com -- When this option is selected, MetaX will send your tag data to tagChimp.com when you write tags. This helps the database to grow, and makes the experience better for all users. This is a voluntary “opt-in” option. No personal data is sent, only the tags.

Your tagChimp ID -- Enter your tagChimp user ID number here. You will need to go to the tagChimp website to get a user ID.